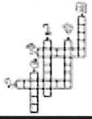


Prénom : _____

Date : _____



LECTURE

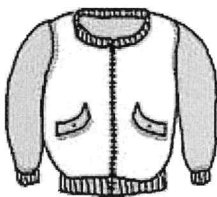
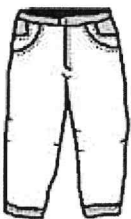
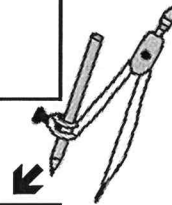
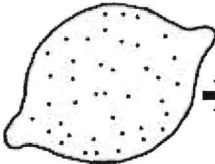
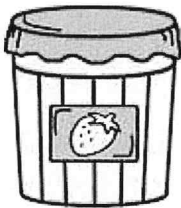
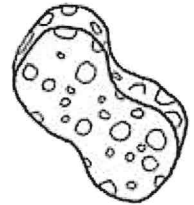
Mots fléchés

[5]

on om

Complète la grille.

POTIRON - COMPAS - CONFITURE - ÉPONGE - BLOUSON - PANTALON - POMPON - CITRON



Prénom : _____

Date : _____



LECTURE

Mots fléchés

[wa]

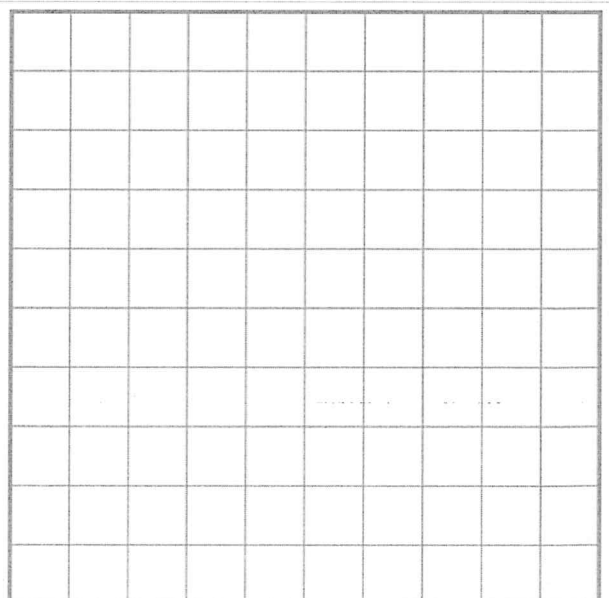
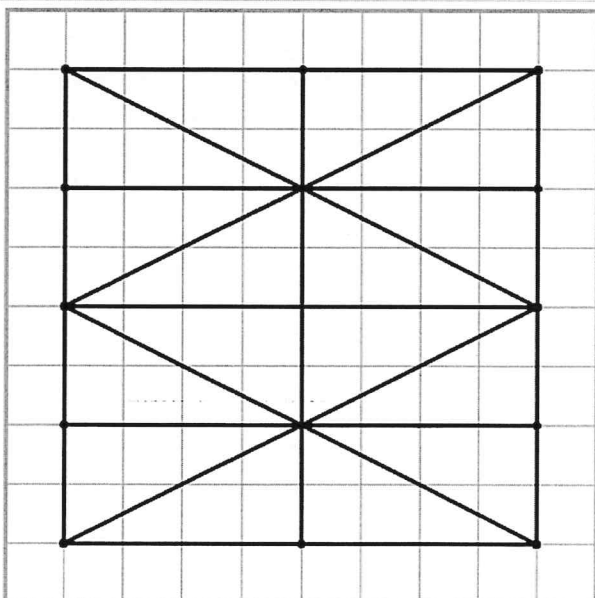
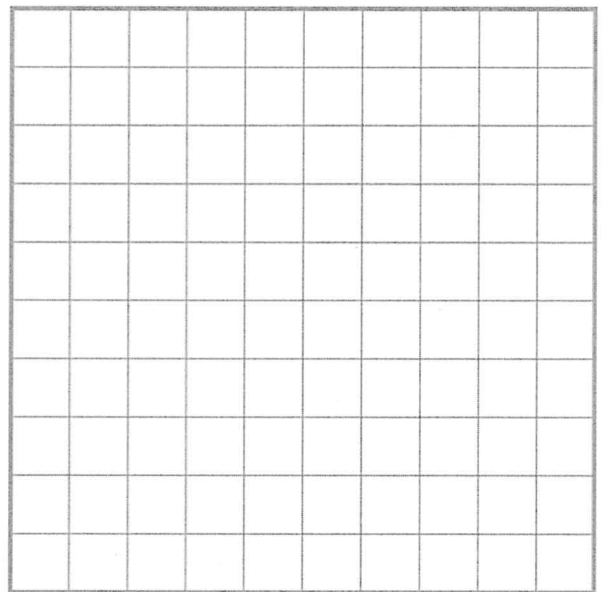
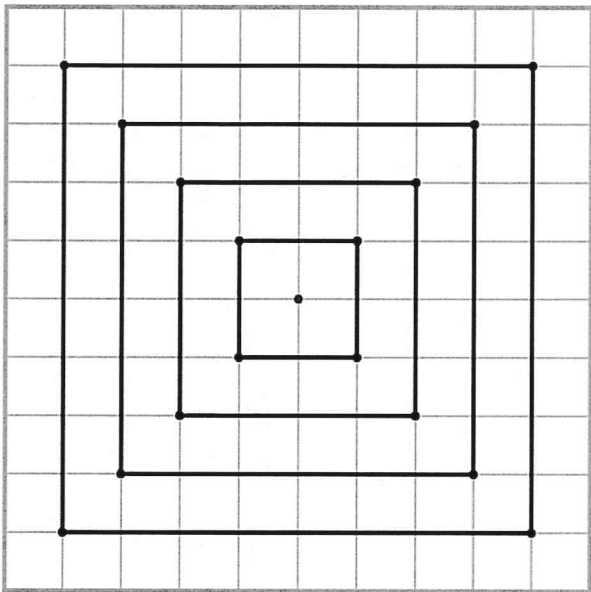
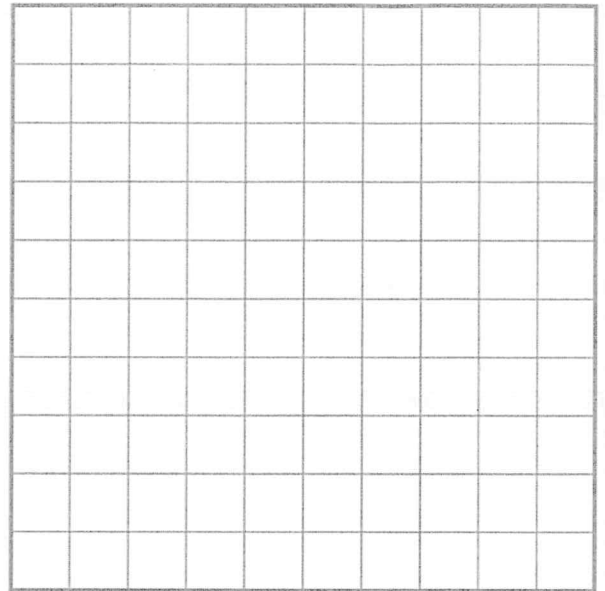
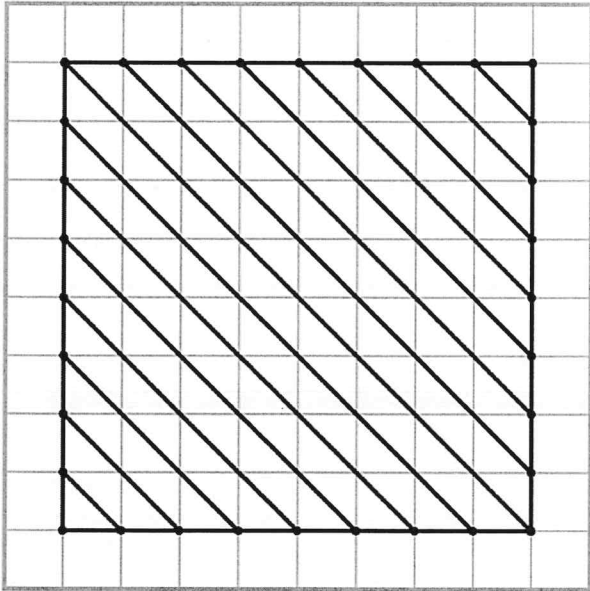
oi

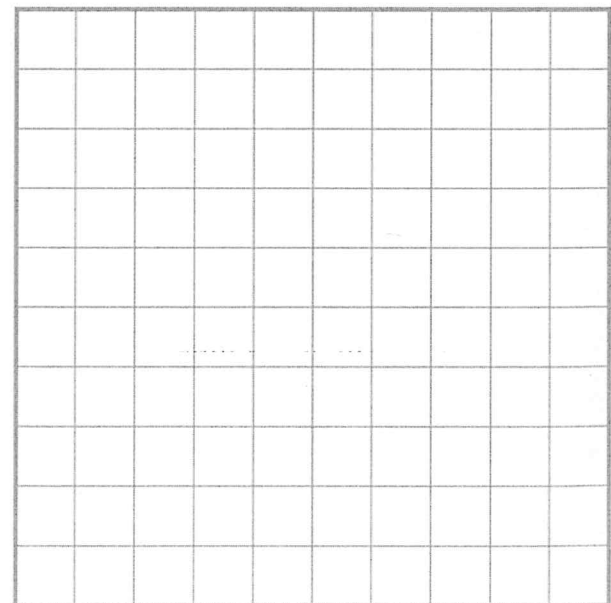
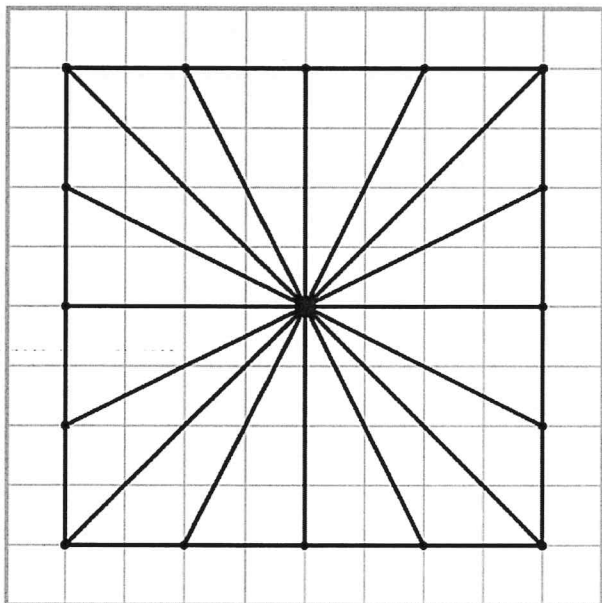
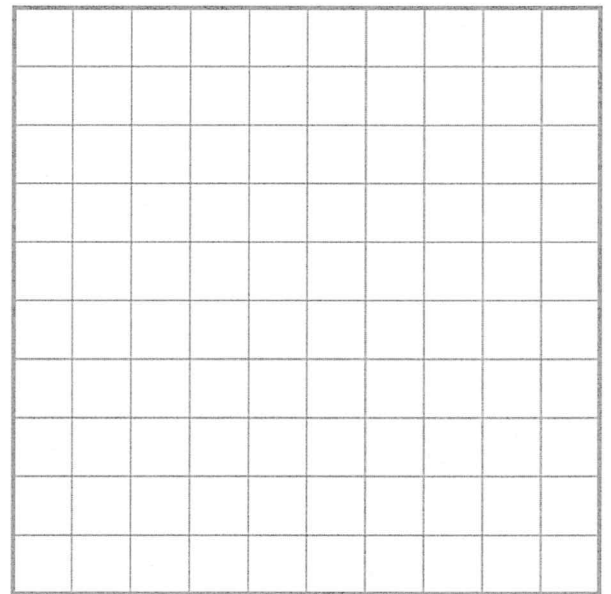
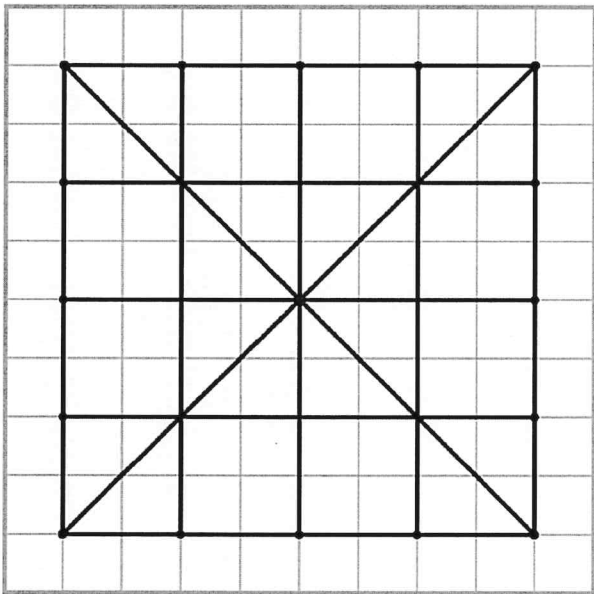
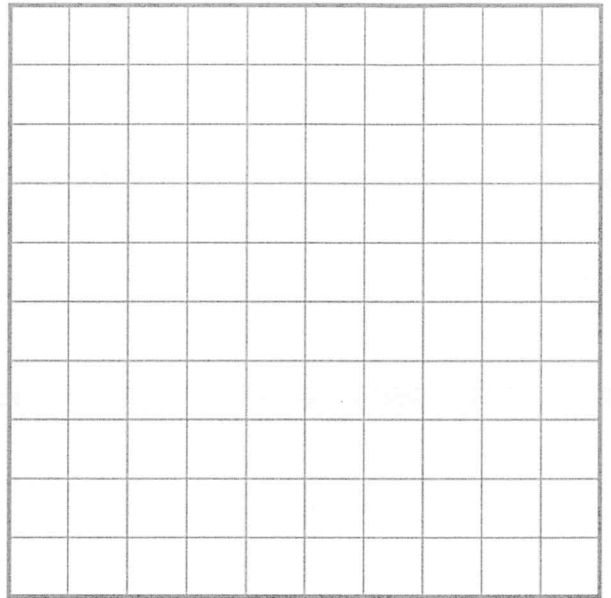
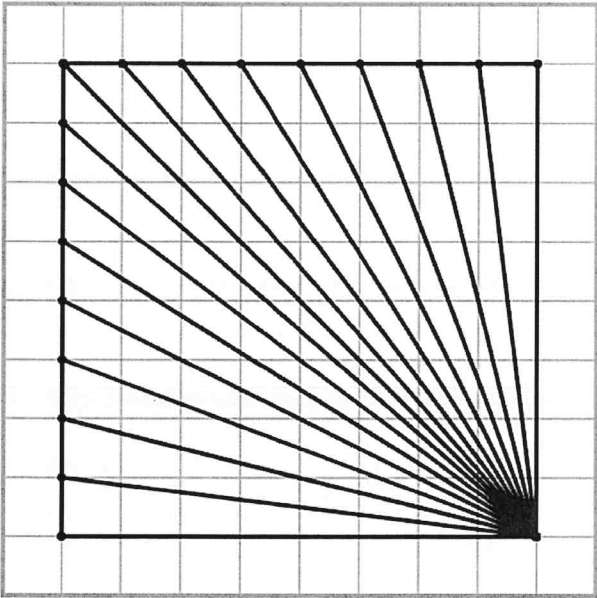
Complète la grille.

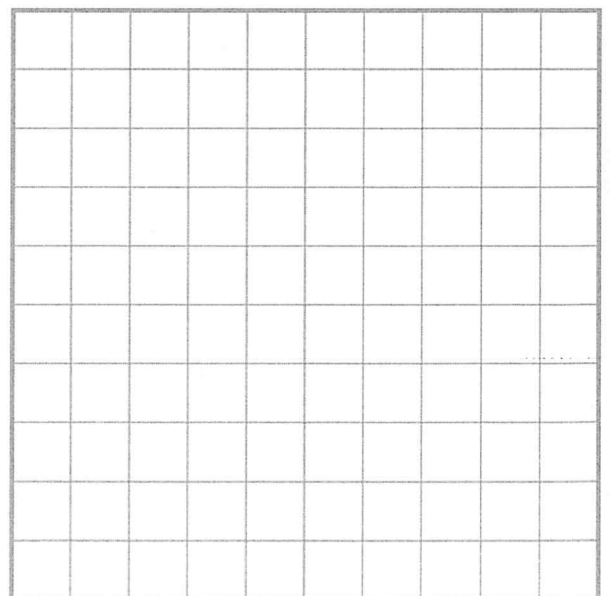
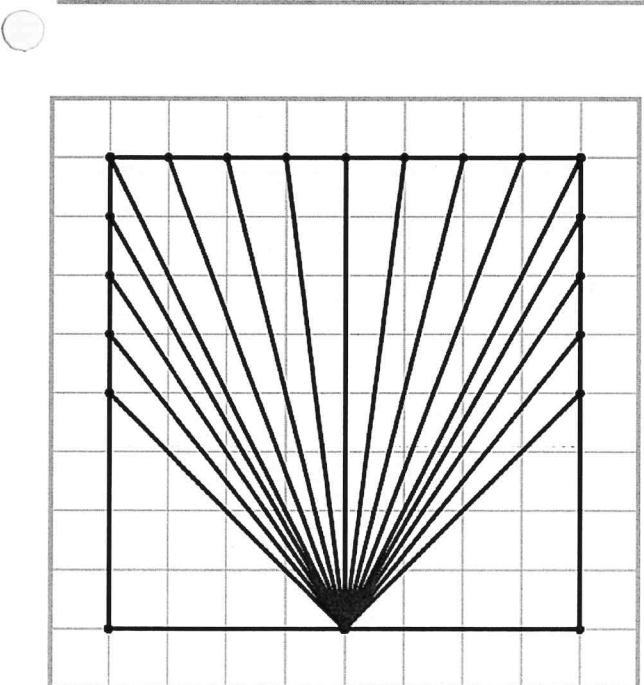
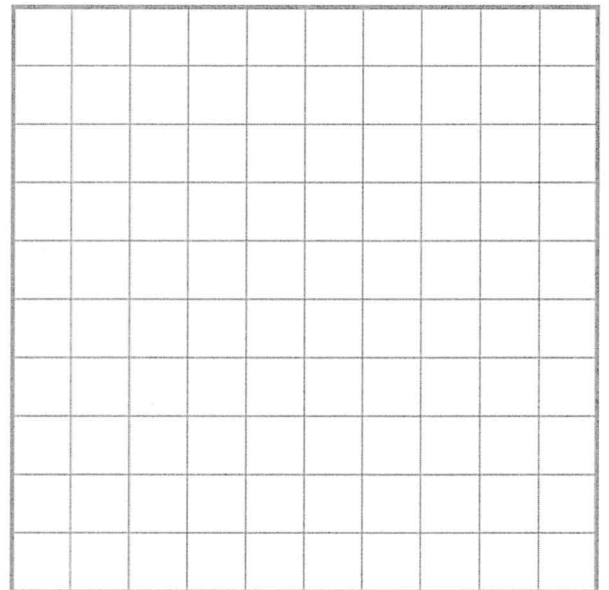
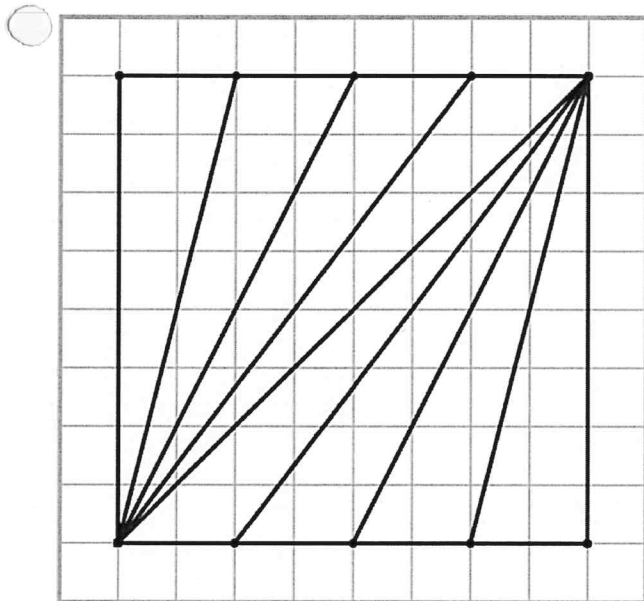
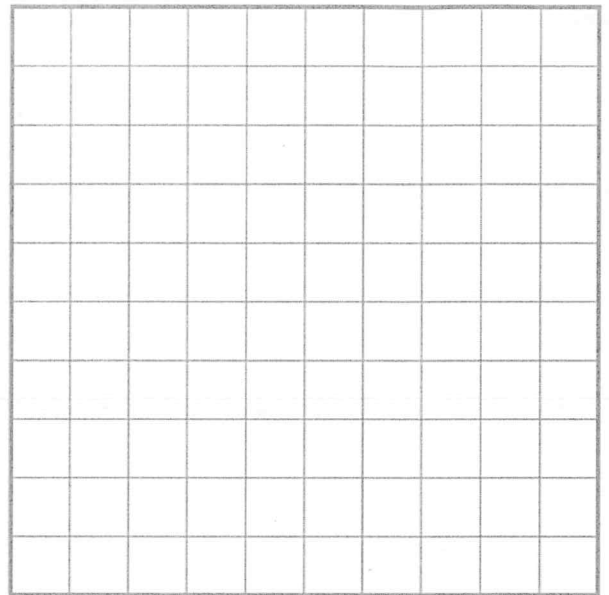
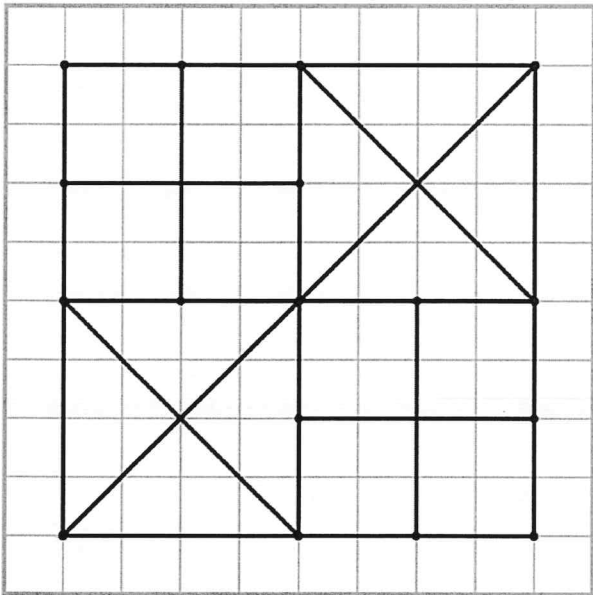
TROIS - COIFFEUSE - ROI - OISEAU - ARMOIRE - BAVOIR - BOITE - ROI - VOITURE - ETOILE - POIRE


The crossword puzzle grid is composed of empty squares. The following words are indicated by illustrations and arrows:

- Top:** An illustration of a bird (OISEAU) with an arrow pointing to a 3-letter vertical word.
- Second Row:** An illustration of a hand pointing (TROIS) with an arrow pointing to a 5-letter horizontal word.
- Third Row:** An illustration of a pear (POIRE) with an arrow pointing to a 2-letter vertical word.
- Fourth Row:** An illustration of a jug (BAVOIR) with an arrow pointing to a 4-letter horizontal word.
- Fifth Row:** An illustration of a Volkswagen Beetle (VOITURE) with an arrow pointing to a 2-letter vertical word.
- Sixth Row:** An illustration of a hairdresser (COIFFEUSE) with an arrow pointing to a 9-letter horizontal word.
- Seventh Row:** An illustration of a star (ETOILE) with an arrow pointing to a 6-letter horizontal word.
- Eighth Row:** An illustration of a wardrobe (ARMOIRE) with an arrow pointing to a 7-letter horizontal word.
- Ninth Row:** An illustration of a crown (ROI) with an arrow pointing to a 2-letter vertical word.
- Tenth Row:** An illustration of a box (BOITE) with an arrow pointing to a 5-letter horizontal word.
- Number 3:** A large number '3' with a downward arrow pointing to the start of a 3-letter vertical word.

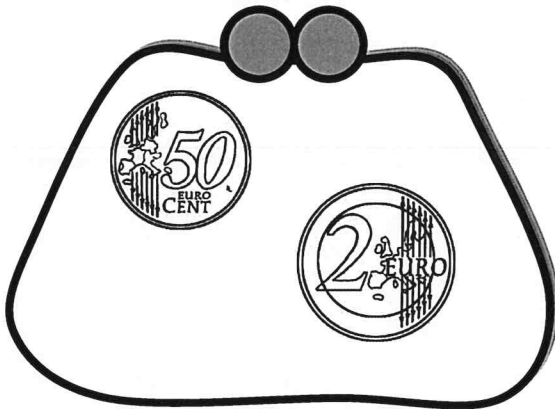




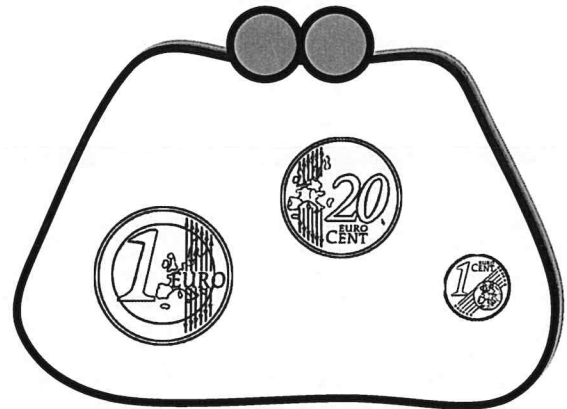


	Connaissance des nombres	La monnaie : euros et centimes d'euros	
---	--------------------------	--	--

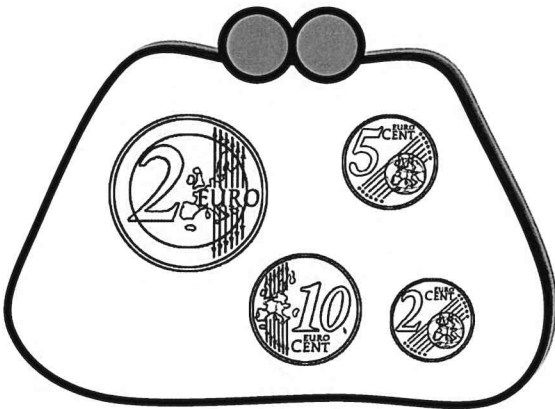
Indique la somme contenue dans chaque porte-monnaie.



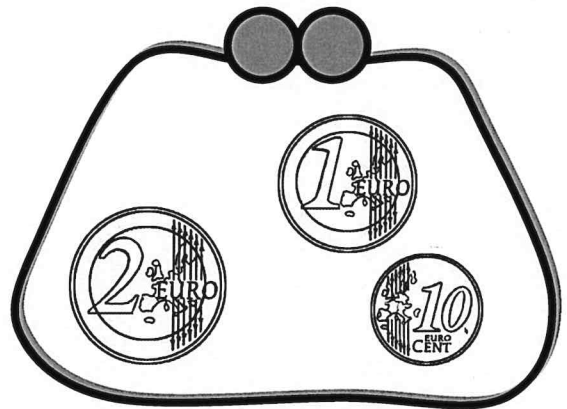
_____ € _____



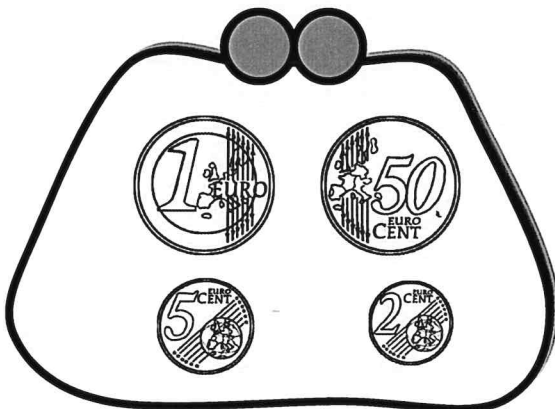
_____ € _____



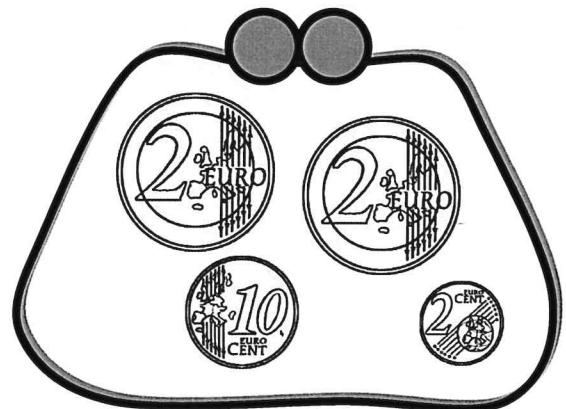
_____ € _____




_____ € _____




_____ € _____




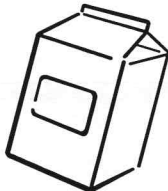
_____ € _____


	Connaissance des nombres	La monnaie : euros et centimes d'euros	
---	--------------------------	--	--


Colorie les pièces qu'il te faut pour acheter chaque bonbon.



1 € 50






0 € 57

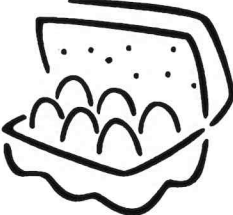




1 € 05






1 € 30






1 € 35






1 € 13




0 € 68

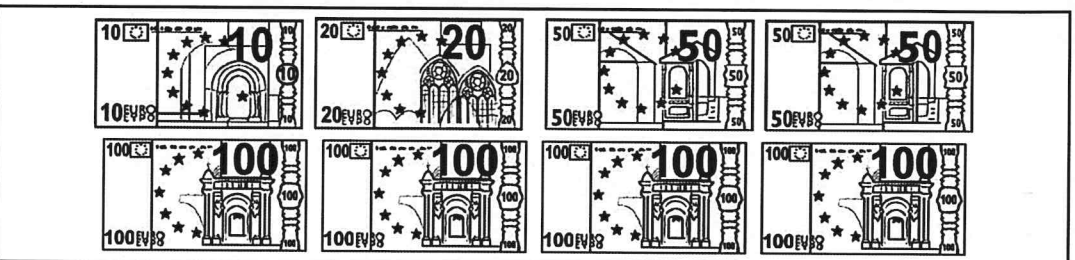
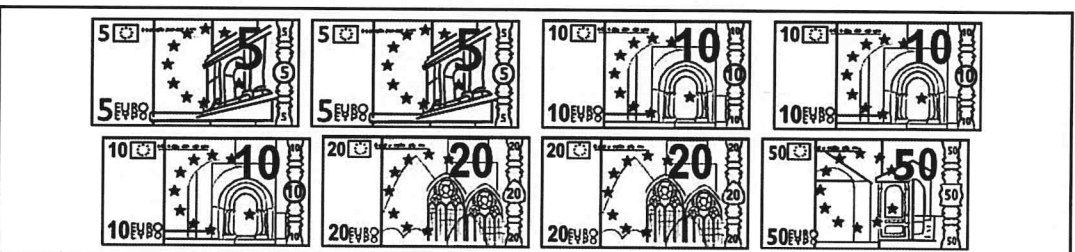
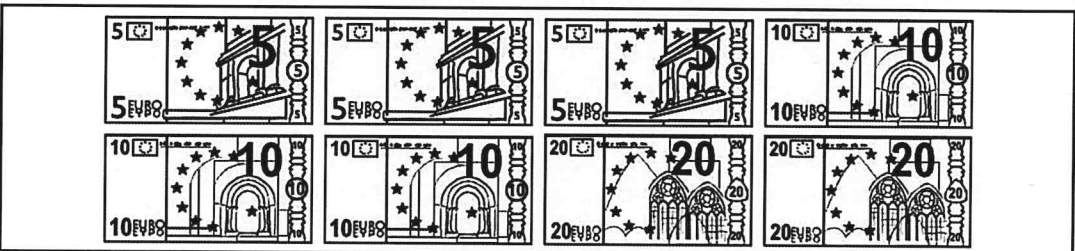
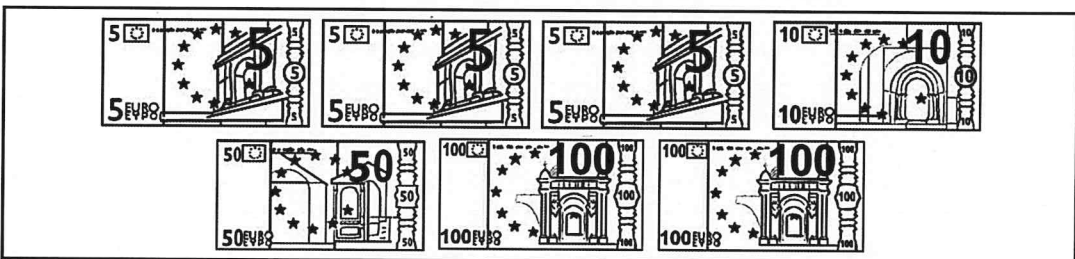
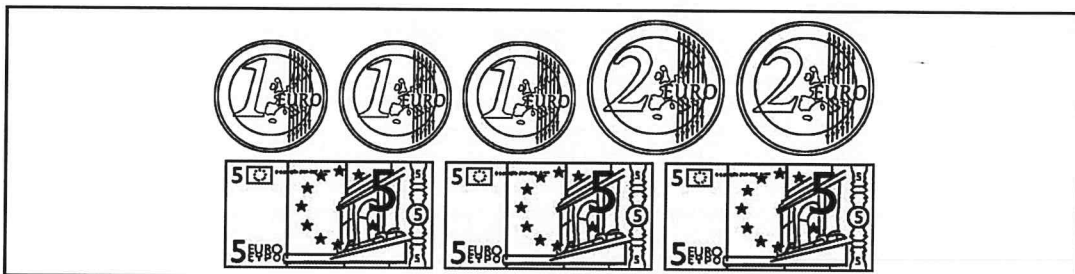
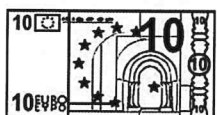
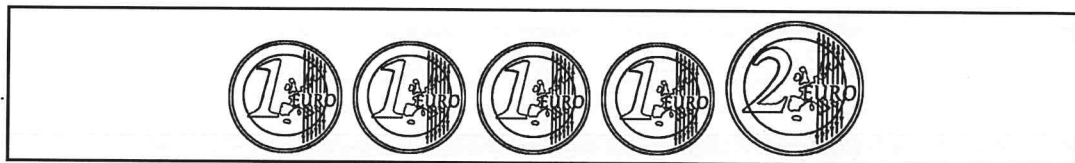



1 € 15

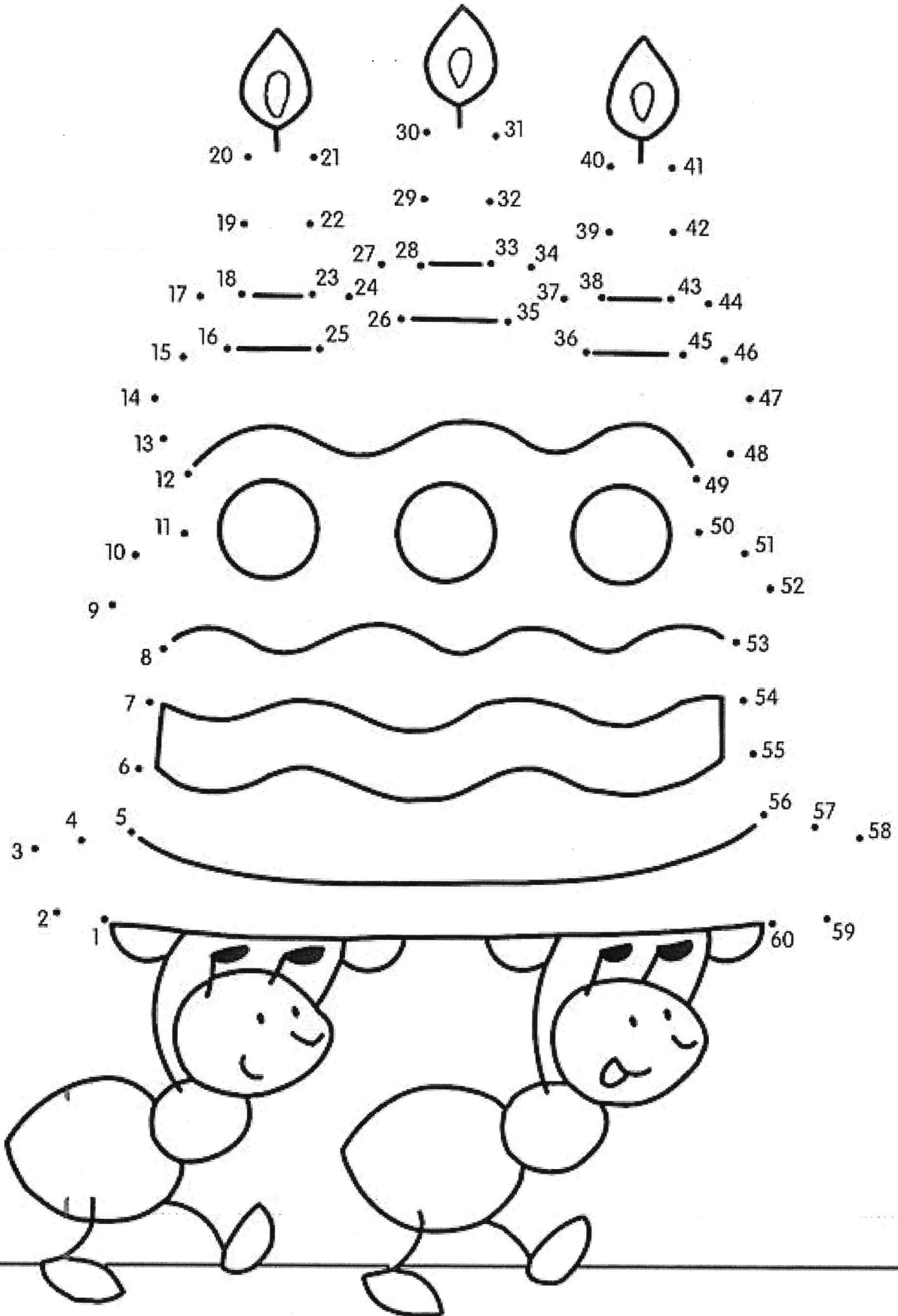


	<h1>Connaissance des nombres</h1>	La monnaie : euros et centimes d'euros	
---	-----------------------------------	--	--

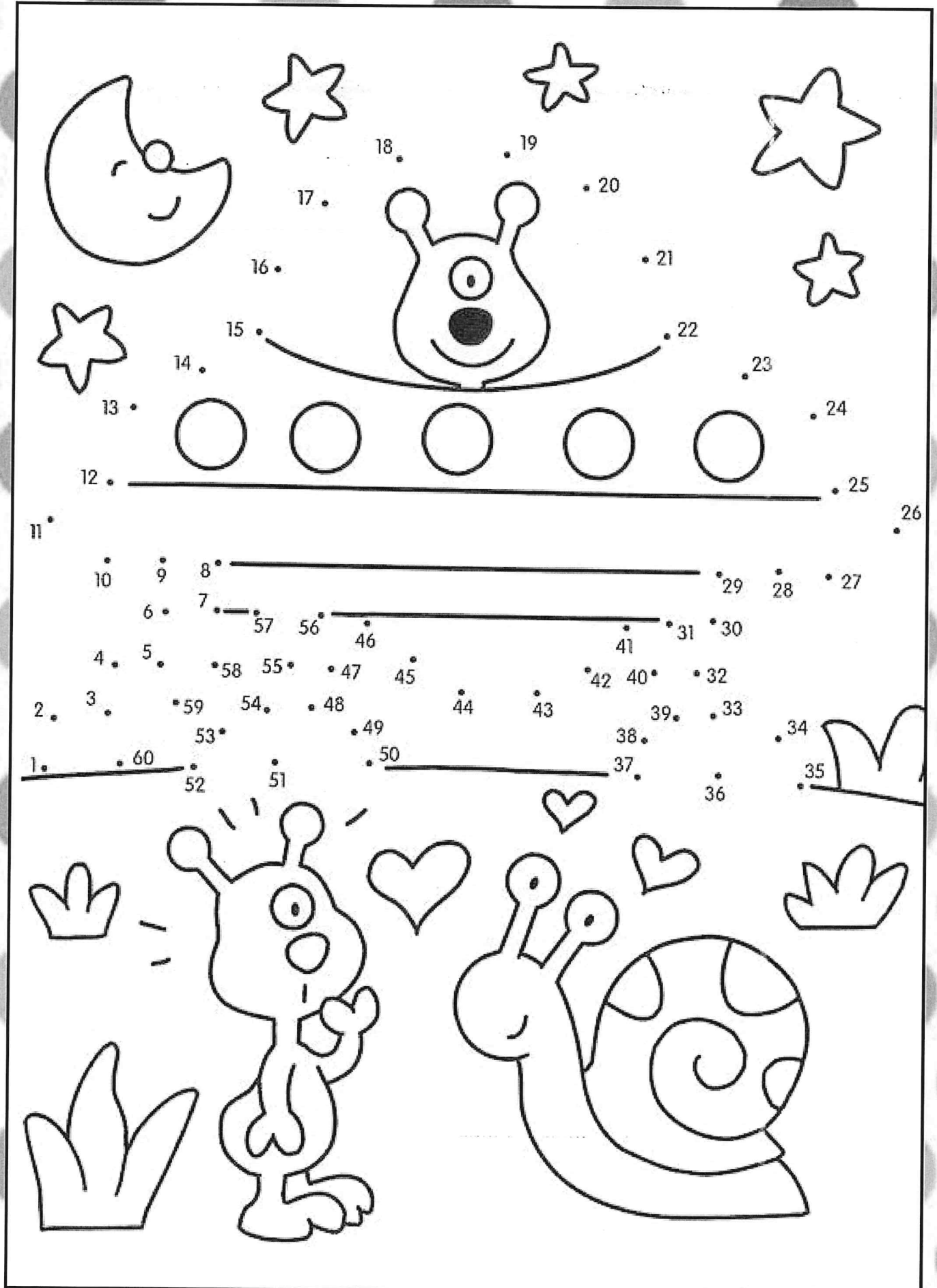
Colorie les pièces et les billets nécessaires pour avoir la même somme.



De 0 à 60



De 0 à 60





Calcul

Fiche 1

Les soustractions

1 Calcule ces soustractions en colonne:

$$\begin{array}{r} 352 \\ - 130 \\ \hline \end{array}$$

$$\begin{array}{r} 364 \\ - 210 \\ \hline \end{array}$$

$$\begin{array}{r} 355 \\ - 141 \\ \hline \end{array}$$

$$\begin{array}{r} 244 \\ - 42 \\ \hline \end{array}$$

$$\begin{array}{r} 358 \\ - 10 \\ \hline \end{array}$$

2 Calcule ces soustractions en colonne:

$$453 - 223$$

$$375 - 134$$

$$887 - 351$$

$$486 - 231$$

3 Calcule ces différences en colonne: (attention à l'ordre des nombres)

$$541 - 224$$

$$143 - 475$$

$$346 - 243$$

$$194 - 74$$



Calcul

Fiche 2

Les soustractions a retenues

1 Calcule ces soustractions en colonne:

$$\begin{array}{r} 356 \\ - 258 \\ \hline \end{array}$$

$$\begin{array}{r} 328 \\ - 87 \\ \hline \end{array}$$

$$\begin{array}{r} 515 \\ - 509 \\ \hline \end{array}$$

$$\begin{array}{r} 791 \\ - 752 \\ \hline \end{array}$$

$$\begin{array}{r} 993 \\ - 8 \\ \hline \end{array}$$

2 Calcule ces soustractions en colonne:

$$649 - 283$$

$$758 - 259$$

$$295 - 139$$

$$894 - 189$$

3 Calcule ces différences en colonne: (attention à l'ordre des nombres)

$$58 - 140$$

$$387 - 119$$

$$547 - 858$$

$$542 - 297$$

Additions de 3 nombres avec retenue(s) - CE2

$$\begin{array}{r}
 \text{m c d u} \\
 8084 \\
 + 560 \\
 + 23 \\
 \hline
 =
 \end{array}$$

$$\begin{array}{r}
 \text{m c d u} \\
 4755 \\
 + 803 \\
 + 57 \\
 \hline
 =
 \end{array}$$

$$\begin{array}{r}
 \text{m c d u} \\
 1698 \\
 + 504 \\
 + 48 \\
 \hline
 =
 \end{array}$$

$$\begin{array}{r}
 \text{m c d u} \\
 8556 \\
 + 616 \\
 + 52 \\
 \hline
 =
 \end{array}$$

$$\begin{array}{r}
 \text{m c d u} \\
 1534 \\
 + 460 \\
 + 59 \\
 \hline
 =
 \end{array}$$

$$\begin{array}{r}
 \text{m c d u} \\
 2454 \\
 + 286 \\
 + 11 \\
 \hline
 =
 \end{array}$$

$$\begin{array}{r}
 \text{m c d u} \\
 8881 \\
 + 287 \\
 + 99 \\
 \hline
 =
 \end{array}$$

$$\begin{array}{r}
 \text{m c d u} \\
 9293 \\
 + 681 \\
 + 78 \\
 \hline
 =
 \end{array}$$

$$\begin{array}{r}
 \text{m c d u} \\
 4200 \\
 + 713 \\
 + 29 \\
 \hline
 =
 \end{array}$$

$$\begin{array}{r}
 \text{m c d u} \\
 8750 \\
 + 191 \\
 + 95 \\
 \hline
 =
 \end{array}$$

$$\begin{array}{r}
 \text{m c d u} \\
 4114 \\
 + 441 \\
 + 21 \\
 \hline
 =
 \end{array}$$

$$\begin{array}{r}
 \text{m c d u} \\
 3887 \\
 + 901 \\
 + 40 \\
 \hline
 =
 \end{array}$$

$$\begin{array}{r}
 \text{m c d u} \\
 6006 \\
 + 388 \\
 + 84 \\
 \hline
 =
 \end{array}$$

$$\begin{array}{r}
 \text{m c d u} \\
 4376 \\
 + 926 \\
 + 55 \\
 \hline
 =
 \end{array}$$

$$\begin{array}{r}
 \text{m c d u} \\
 9030 \\
 + 938 \\
 + 82 \\
 \hline
 =
 \end{array}$$

Additions de 3 nombres à 4 et 3 chiffres avec retenue(s) - CE2

$$\begin{array}{r}
 \text{m c d u} \\
 2623 \\
 + 677 \\
 + 531 \\
 \hline
 =
 \end{array}$$

$$\begin{array}{r}
 \text{m c d u} \\
 2566 \\
 + 596 \\
 + 244 \\
 \hline
 =
 \end{array}$$

$$\begin{array}{r}
 \text{m c d u} \\
 4471 \\
 + 799 \\
 + 732 \\
 \hline
 =
 \end{array}$$

$$\begin{array}{r}
 \text{m c d u} \\
 4086 \\
 + 394 \\
 + 326 \\
 \hline
 =
 \end{array}$$

$$\begin{array}{r}
 \text{m c d u} \\
 1705 \\
 + 847 \\
 + 385 \\
 \hline
 =
 \end{array}$$

$$\begin{array}{r}
 \text{m c d u} \\
 7659 \\
 + 886 \\
 + 345 \\
 \hline
 =
 \end{array}$$

$$\begin{array}{r}
 \text{m c d u} \\
 4641 \\
 + 858 \\
 + 750 \\
 \hline
 =
 \end{array}$$

$$\begin{array}{r}
 \text{m c d u} \\
 4846 \\
 + 157 \\
 + 414 \\
 \hline
 =
 \end{array}$$

$$\begin{array}{r}
 \text{m c d u} \\
 1137 \\
 + 660 \\
 + 551 \\
 \hline
 =
 \end{array}$$

$$\begin{array}{r}
 \text{m c d u} \\
 6499 \\
 + 369 \\
 + 900 \\
 \hline
 =
 \end{array}$$

$$\begin{array}{r}
 \text{m c d u} \\
 6322 \\
 + 778 \\
 + 461 \\
 \hline
 =
 \end{array}$$

$$\begin{array}{r}
 \text{m c d u} \\
 5888 \\
 + 814 \\
 + 245 \\
 \hline
 =
 \end{array}$$

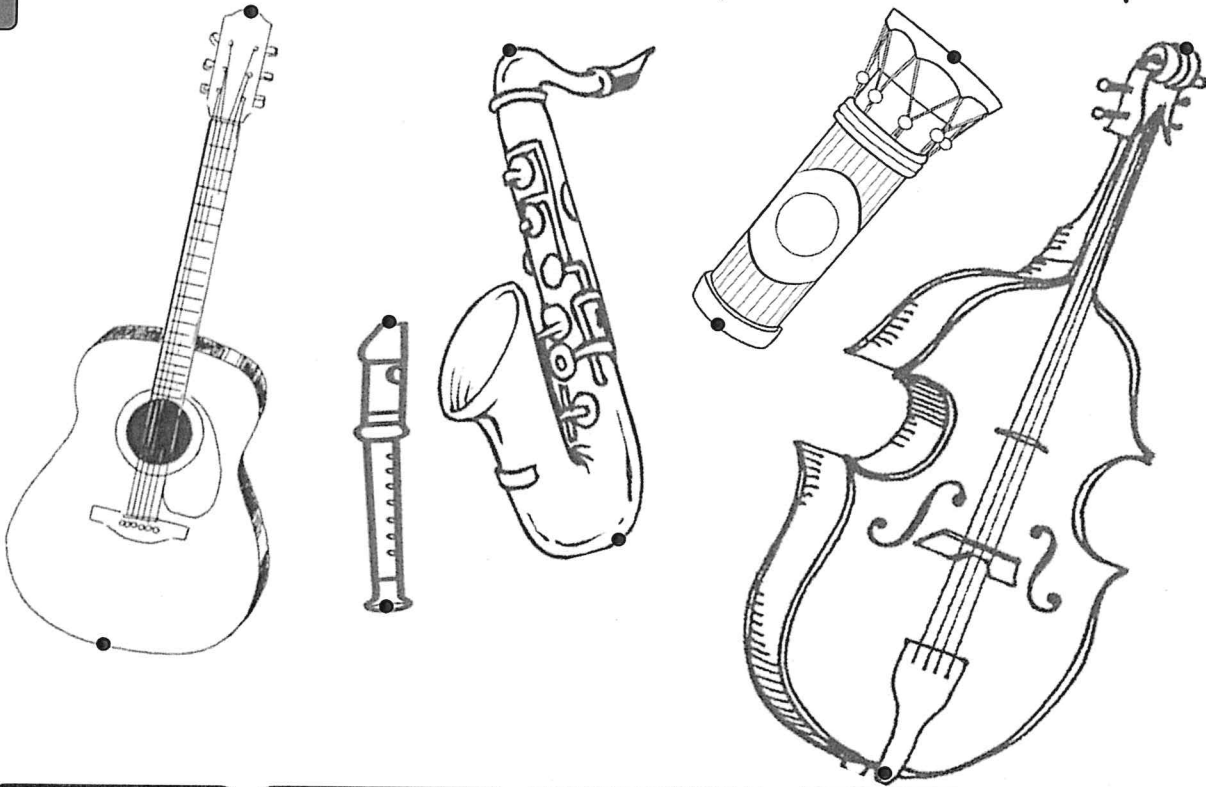
$$\begin{array}{r}
 \text{m c d u} \\
 9068 \\
 + 316 \\
 + 164 \\
 \hline
 =
 \end{array}$$

$$\begin{array}{r}
 \text{m c d u} \\
 3478 \\
 + 509 \\
 + 414 \\
 \hline
 =
 \end{array}$$

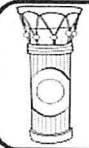
$$\begin{array}{r}
 \text{m c d u} \\
 3681 \\
 + 352 \\
 + 562 \\
 \hline
 =
 \end{array}$$



1 Mesure avec ta règle, la taille de chaque instrument de musique.



.... cm



.... cm



.... cm



.... cm



.... cm

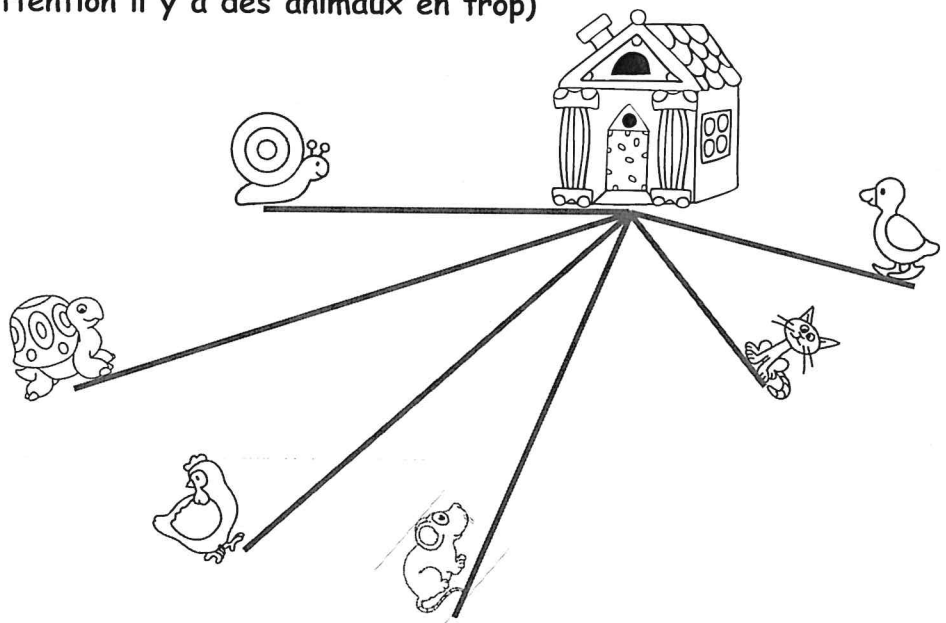
2 Retrouve l'animal qui va parcourir ces distances pour rejoindre la maison.
(attention il y a des animaux en trop)

5cm

8cm

3cm

6cm





Mesure avec ta règle la ligne de chaque lettre.

.... cm cm cm cm cm cm

2 Trace une ligne pour chaque lettre.

4 cm	13 cm	11 cm	8 cm	5 cm	10 cm



lundi

mardi

mercredi

jeudi


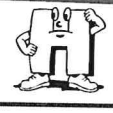




vendredi

samedi

dimanche

Fiche n° 9

Rends à chaque lettre sa ligne. (attention il y a deux lignes en trop)

					
13 cm	8 cm	12 cm	2 cm	4 cm	9 cm

Handwriting practice area with four rows of dashed boxes and arrows. The first row has two boxes with arrows pointing right. The second row has two boxes with arrows pointing left. The third row has two boxes with arrows pointing right. The fourth row has two boxes with arrows pointing left. A dotted line is at the bottom.

2 Colorie la bonne longueur de ruban pour emballer les cadeaux.



10 cm



15 cm



7 cm



16 cm



12 cm